

ISG Update Newsletter

Station Leisure & Learning Centre

■ ISG's Update October 2023 – Station Leisure and Learning centre (previously Station Road Leisure Centre)

Message from the Project Manager: Adam Walker

Hello again, it has only been a short period since my last newsletter, but a lot has been undertaken on the project we are now progressing well with the roofing works on the project with the liner sheet installed and the commencement of the top sheeting to the roof area, you will have noted the crane visits delivering materials to the roof area I'm sure.

We are progressing towards the commencement of the cladding works which will be starting in a week's time on the project, which will be another clear visual change to the building for you all to see and a key milestone.

Goodbye for now and I will start to include more updates moving forward and in the near future.

Current and Upcoming Works

We have been working on the preparation of the concrete slabs to the building and part of the process of this involves the concrete finishing of these items. To bring these elements to a level of flatness required we must undertake a process called power floating. Unfortunately, this is a continuous process which once started is likely take a longer period to complete than a normal working day, we have the final large pour of the main slab to the ground floor being undertaken today this will require works continuing past 7pm, we apologise in advance for any inconvenience caused from the additional noise during these works tonight.

This slab pour is over 120 cubic metres of concrete and due to the slab thickness is likely to be the latest period of finish we will have on the project. Thankfully this is the last pour of these type and we will not be in a position where we will be required to complete works like this again.

Accessing the Leisure Centre

The existing sports centre remains open and access will be maintained throughout the project, as a general rule all access will now be through the rear and the remaining open carpark at the back of the centre following the clearly signed route.

Supporting Local People

We are currently in discussions with RBL in Mablethorpe and have commissioned some artwork to be completed by a local art group and Skegness County Care we are providing the art equipment, and this should be ready for displaying in early autumn and be positioned on the hoardings so watch this space.

We have also been engaging with a local Primary school over the last few weeks and will be receiving over the upcoming months visits from groups of 15-20 children once a month to complete what we call roving reporting visits, where they will attend the site undertake a walk around and report back on the monthly progress so they can understand first hand the changes that are involved in the new building, because they are all local children this will give them the opportunity to really be invested in what is a exciting new addition to the local community.

Considerate Constructor

ISG are a founder member of the Considerate Constructors Scheme and take our role very seriously, working hard to minimise the impact of our works on residents.

We are committed to minimising any inconvenience caused during the project. If you have any concerns or queries, please contact:

Project Manager Adam Walker via email on adam.walker@isgltd.com

For your information these are some impressions of the intended building once the project is completed:



View from High Street



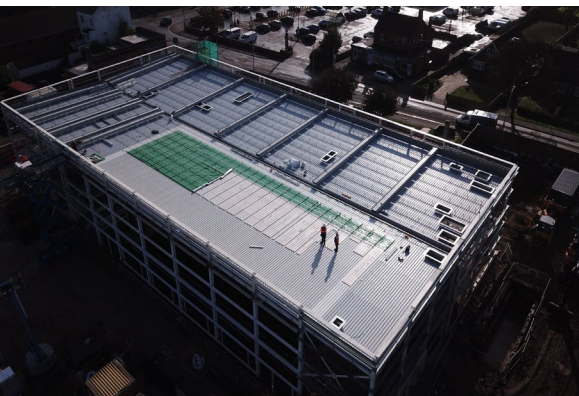
View from the new car park



View from behind the War Memorial



View from the new car park



Some Photographs of the site and drone footage above